

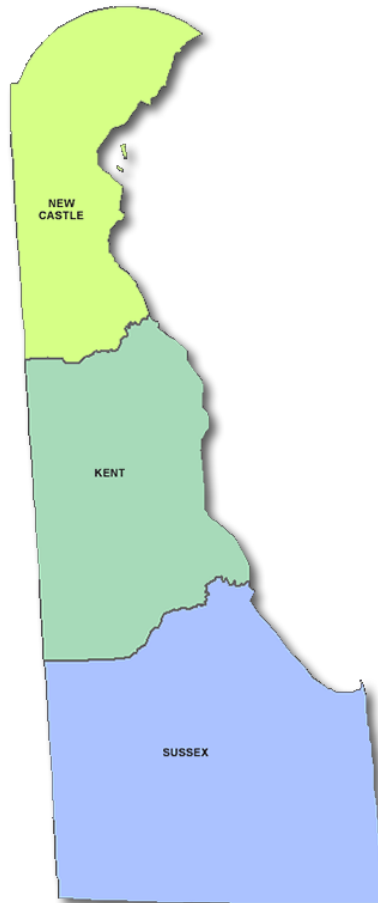


DANA

LEADING
THE SECTOR
FORWARD

*Delaware Alliance for
Nonprofit Advancement*

We help nonprofits help Delaware!



2014 Annual Report

BOARD of DIRECTORS

William R. Allan
Chairman
Delaware Community Foundation

Thère du Pont
Immediate Past Chair
Longwood Foundation

Carolyn Fredricks
Vice Chair
Modern Maturity Center

Michele Schiavoni
Secretary
Christiana Care Health System

Nicholas P. Lambrow
Treasurer
M&T Bank

Paulette Austin
Generations Home Care, Inc.

Sheila Bravo
Rehoboth Art League

Craig Crouch
Kent-Sussex Industries

Mark Dunkle
Parkowski, Guerke & Swayze

D. Wayne Holden
Community Member

John Kiely
PricewaterhouseCoopers

Claudia Peña Porretti
La Esperanza, Inc.

Joseph M. Schell
Community Member

Fred Sears, II
Delaware Community Foundation

John H. Taylor, Jr.
Delaware Public Policy Institute
Delaware State Chamber of Commerce

Mark A. Turner
WSFS Bank

Richelle Vible
Catholic Charities

Harry L. Williams
Delaware State University

Mission and Vision

As the leader of the nonprofit sector, DANA's mission is to strengthen, enhance, and advance nonprofits and the sector in Delaware through advocacy, training, capacity building, and research.

DANA's vision is for quality of life for all Delawareans to improve because nonprofits are delivering on their missions more efficiently and effectively by working with us.



DANA by the Numbers

953	Number of followers DANA has on Twitter (June 2014)	20	Number of nonprofit employees, from 18 different nonprofit employers, that have received Wilmington University/DANA course scholarships
740	Number of 'likes' DANA has on Facebook (June 2014)	17	Number of times DANA was mentioned in the press talking about the nonprofit sector
436	Number of individuals, from 190 organizations, that attended DANA events in 2013	5	Number of DANA staffers committed to working for Delaware nonprofits every day
282	Number of nonprofit DANA members at the end of 2013	3	Number of counties that DANA serves in Delaware... yes, that's all of them!
84	Percent growth in DANA membership since the end of 2011	1	Our singular focus to strengthen, enhance, and advance nonprofits and the sector in Delaware!
28	Number of member organizations that engaged in consulting services with DANA in 2013		

DANA Staff (as of July 1, 2014)



Christopher Grundner

President and Chief Executive Officer

John Baker

Executive Vice President of Policy and Programs

Paul Stock

Executive Vice President of Consulting

Kristin Davis

Vice President of Communications and Marketing

Caitlin Giles-McCormick

Director of Operations and Research

DANA Financial Information (for calendar year 2013)

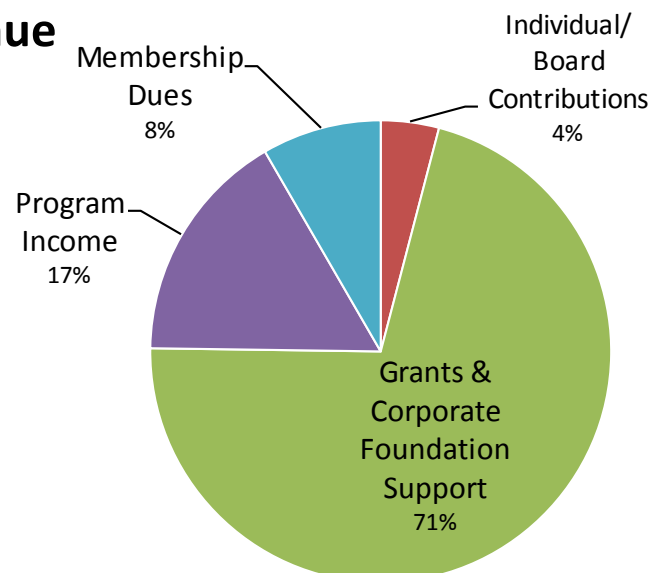
The Delaware Alliance for Nonprofit Advancement's Summary of Financial Position for the end of year 2013 is as follows:

- Assets—\$438,238
- Liabilities—\$14,042
- Net Assets—\$424,196

In 2013, the Delaware Alliance for Nonprofit Advancement had revenues of \$567,869, which break out as follows:

- Individual/Board Contributions—\$23,155
- Grants & Corporate Foundation Support—\$404,000
- Program Income—\$93,159
- Membership Dues—\$47,555

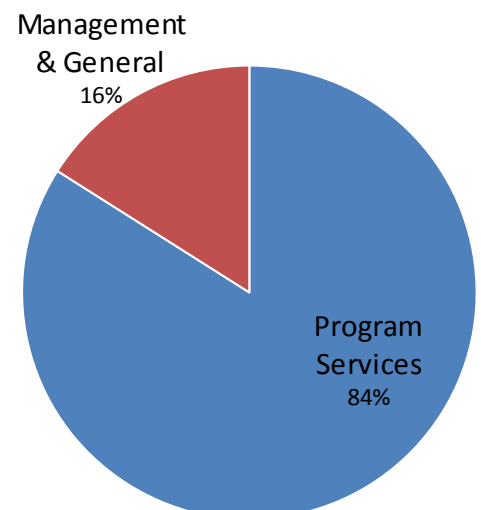
2013 Revenue



2013 Expenses

In 2013, the Delaware Alliance for Nonprofit Advancement had expenses of \$533,118, which break out as follows:

- Program Services—\$447,770
- Management & General—\$85,348

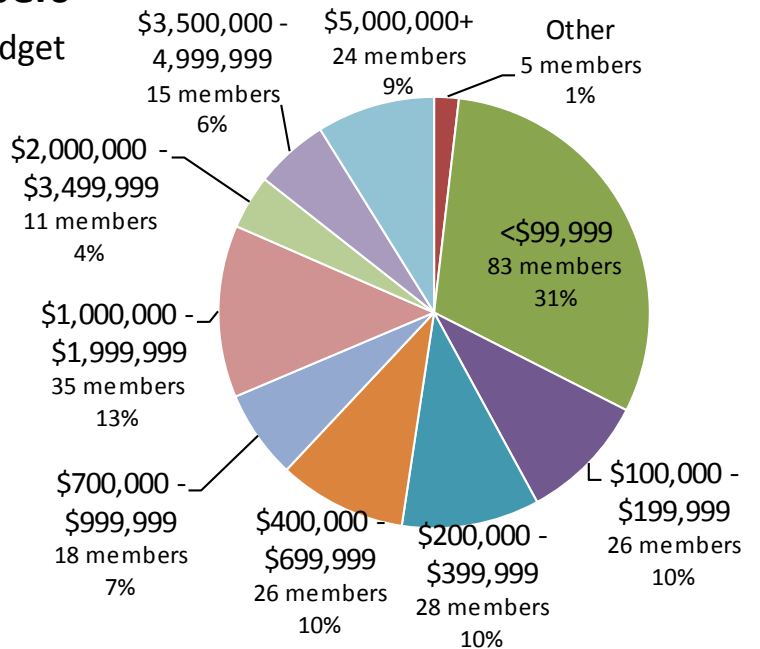


DANA Membership Information (as of July 1, 2014)

Total Members: 271

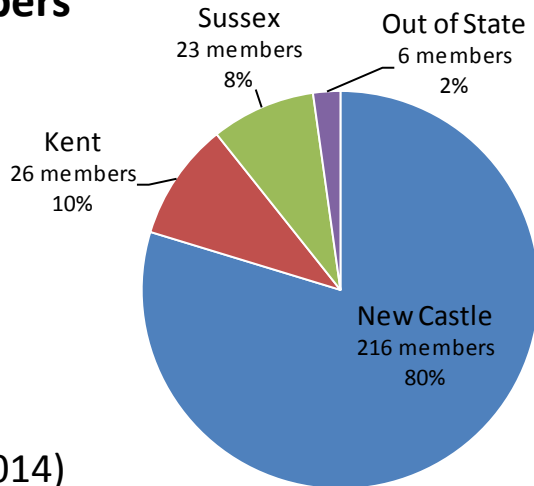
DANA Members by Operating Budget

- <\$99,999—83
- \$100,000 - \$199,999—26
- \$200,000 - \$399,999—28
- \$400,000 - \$699,999—26
- \$700,000 - \$999,999—18
- \$1,000,000 - \$1,999,999—35
- \$2,000,000 - \$3,499,999—11
- \$3,500,000 - \$4,999,999—15
- \$5,000,000 + —24
- Other—5



DANA Members by County

- New Castle—216
- Kent—26
- Sussex—23
- Out of State—6



DANA Members by Name (as of July 1, 2014)

Advanced Educational Systems

AIDS Delaware, Inc.

Alzheimer's Association Delaware Valley Chapter

American Red Cross of the Delmarva Peninsula

Andrew McDonough B Positive Foundation (B+ Foundation)

Andy's Friends

ARC of Delaware

Arden Club, Inc.

The ARK Educational Consulting

Art Therapy Express Program, Inc.

Arthur J. Turner Jr. Scholarship Foundation

Autism Delaware, Inc.

BDPA Northern Delaware

Better Business Bureau of Delaware

A Better Chance for Our Children

Better Homes Of Seaford, Inc.

Big Brothers Big Sisters of Delaware

Biggs Museum of American Art

Bike Delaware

Blood Bank Of Delmarva, Inc.

Brain Injury Association Of Delaware

Brandywine Counseling & Community Services, Inc.

Bridgeville Senior Center

BTL Foundation International Services

C.E.R.T.S., Inc.

CAMP Rehoboth

DANA Members by Name continued...

Cancer Care Connection, Inc.	Delaware Association for Children of Alcoholics
Cancer Support Community Delaware, Inc.	Delaware Association for Public Administration
Candlelight Theatre	Delaware Association for the Blind
Cape Henlopen Educational Foundation (CHEF)	Delaware Association of Volunteer Administrators
Carl M. Freeman Foundation	Delaware Audubon Society
The Cathedral Choir School of Delaware	Delaware Botanic Gardens at Pepper Creek
Catholic Charities	Delaware Breast Cancer Coalition
Center for Community Research and Service	Delaware Center for Horticulture
A Center For Relational Living	Delaware Center for Justice
Central Delaware Chamber of Commerce	Delaware Center for the Contemporary Arts
Challenge Program	Delaware Center for the Inland Bays
Child Placement Review Board	Delaware Chamber Music Festival
Child, Inc.	Delaware Charter Schools Network, Inc.
Children And Families First Delaware, Inc.	Delaware Children's Museum
Children Empowered by Love, Inc.	Delaware Children's Theatre
Children's Advocacy Center Of Delaware, Inc.	Delaware Coalition Against Domestic Violence
Children's Beach House, Inc.	Delaware Coalition Against Gun Violence
Choices for Community Living	Delaware Coalition For Literacy, Inc.
Christina Cultural Arts Center, Inc.	Delaware Community Reinvestment Action Council, Inc.
Christmas Shop Foundation	Delaware Council On Gambling Problems, Inc.
Clarifi	Delaware Dispute Center
Claymont Community Center	Delaware Division of the Arts
Claymont Renaissance Development Corporation	Delaware End of Life Coalition
Clear Space Theatre Company	Delaware First Media
Coastal Concerts	Delaware Futures, Inc.
Colonial Chapter: Paralyzed Veterans Of America	Delaware Greenways, Inc.
Common Cause Delaware	Delaware Guidance Services For Children & Youth
Communities In Schools Of Delaware, Inc.	Delaware Health Information Network
Community Service Building Corporation	Delaware Hospice, Inc.
Compassionate Caregivers	Delaware Housing Coalition, Inc.
Compeer Delaware	Delaware Housing Opportunity Fund, Inc.
Connecting Generations	Delaware Humane Association
Connections CSP	Delaware Humanities Forum
contactLifeline	Delaware Interfaith Power and Light
Delaware 4-H Foundation	Delaware Kids Fund
Delaware Adolescent Program, Inc.	Delaware Nature Society
Delaware Alliance for Community Advancement (DACA)	Delaware Public Policy Institute
Delaware Animal Advocacy Guild, Inc.	Delaware Shakespeare Festival
Delaware Art Museum	Delaware Sports Museum and Hall of Fame
Delaware Arts Alliance	Delaware State Parks
Delaware Association for Adult & Community Educators (DAACE)	Delaware Strong Families

DANA Members by Name continued...

Delaware Sustainable Energy Utility
Delaware Symphony Orchestra
Delaware Theatre Company
Delaware Thresholds, Inc.
Delaware Volunteer Legal Services, Inc.
Del-Mar-Va Council Boys Scouts of America
Delta Outreach and Education Center, Inc.
DFRC (Del. Fndn. Reaching Citizens with intellectual disABILITIES)
DIAE
Diamond State Community Land Trust
Down Syndrome Association of Delaware
Easter Seals Delaware & Maryland Eastern Shore, Inc.
Educating Nurses, Inc.
Eleutherian Mills-Hagley Foundation, Inc.
Empowering Solutions, Inc.
Epilepsy Foundation of Delaware
Faithful Friends Animal Society
FAME, Inc.
Family Counseling Center of St. Paul
Family Promise Delaware
First State Community Acton Agency, Inc.
FISH of Northern Delaware
Food Bank of Delaware
Forgotten Cats, Inc.
Foundation for a Better Tomorrow
Fram Center for Active Adults
Fresh Start Scholarship Foundation
Friends of Auburn Heights Preserve, Inc.
Friends Of White Clay Creek State Park
Friends of Wilmington Parks
Gaudenzia Fresh Start of Delaware
Generations Home Care, Inc.
Genius@work foundation
Girl Scouts Of The Chesapeake Bay Council, Inc.
Global Institute for Energy, Environment & Sustainability
Goodwill Industries Of Delaware & Delaware County
The Grand Opera House
Greater Brandywine Village Revitalization, Inc.
Greater Wilmington Convention & Visitors Bureau
Greenbank Mill and Philips Farm
Habitat For Humanity of New Castle County
Healthy Foods for Healthy Kids
Heart In The Game
Home of the Brave Foundation
Homeless Planning Council Of Delaware, Inc.
HOND, Inc.
The Hospitality School
Human Services Council, Inc./Adopt-A-Family
In Trust Center
Ingleside Homes, Inc.
Innovative Schools Development Corp.
Intercollegiate Studies Institute
Jewish Family Services Of Delaware, Inc.
Jewish Federation of Delaware
Jobs for Delaware Graduates
Joshua M. Freeman Foundation
Junior League Of Wilmington, Inc.
Kalmar Nyckel Foundation
The Kenny Family Foundation
Kent Sussex Industries, Inc.
Kind to Kids Foundation
La Esperanza, Inc.
La Red Health Center, Inc.
Latin American Community Center, Inc.
League Of Women Voters Of Delaware
Limen House, Inc.
Literacy Volunteers Serving Adults Northern Delaware
Love, Inc.
Lutheran Community Services, Inc.
Make-A-Wish
Mancus Foundation, Inc.
Mark J. Dowling Foundation, Inc.
Medical Society of Delaware
Melomanie, Inc.
Mental Health Association in Delaware
MidAtlantic Wine + Food Festival
Milford Housing Development
Milford Second Street Players, Inc.
Ministry of Caring
Modern Maturity Center
Montessori Works
Music School of Delaware

DANA Members by Name continued...

Nanticoke Senior Center
National Alliance on Mental Health Illness in Delaware
Nativity Preparatory School of Wilmington
The Nature Conservancy
NCALL Research, Inc.
NEAIR
Nehemiah Gateway CDC
Neighborhood House
Nemours Fund for Children's Health
New Castle Senior Center, Inc.
New Directions Delaware, Inc.
New Knollwood Civic Association
Newark Arts Alliance
Newark Day Nursery Association, Inc.
Newark Senior Center
Newark Symphony Orchestra
OperaDelaware
Operation Warm, Inc.
Pacem in Terris
Parent Information Center of Delaware
Pathways to Success, Inc.
PAWS for People
People's Place II, Inc.
Pershing Rifles National Alumni Association
Planned Parenthood Of Delaware, Inc.
Plant A Tree A Day International Foundation
Police Athletic League of Delaware
Positive Growth Alliance
Prekindergarten Reading Encouragement Project
Pressley Ridge
Primeros Pasos (First Steps), Inc.
Prison Ministries of Delaware, Inc.
Read Aloud Delaware
Reading ASSIST Institute
Reaping Harvest Ministries, Inc.
Rebuilders of Broken Walls Ministries
Rehoboth Art League, Inc.
Rehoboth Beach Film Society
Rodney Street Tennis & Tutoring Association
Ronald McDonald House Of Delaware, Inc.
Rose Hill Community Center
SCORE Delaware
The Schwartz Center
Seamen's Center of Wilmington, Inc.
Serenity Place, Inc.
Serviam Media, Inc.
ServiceSource
Seven ESPTSPL Group
Simply Equal Education
The SmartDrive Foundation
Smyrna Opera House
Sojourners' Place
Southbridge Medical Advisory Council, Inc.
Special Olympics Delaware
Specialisterne
St. Patrick's Center, Inc.
Sunday Breakfast Mission
Supporting Kidds, Inc.
Teach for America Delaware
Tech Impact
Teens In Perspective
Tova Community Health
TRIAD (Trinity Alcohol & Drug Program)
Trustees of Color
United Cerebral Palsy of Delaware, Inc.
United Way Of Delaware, Inc.
Urban Bike Project of Wilmington, Inc.
Urban Youth Golf Program Association/The First Tee of Delaware
Victims' Voices Heard, Inc.
West End Neighborhood House
Westside Family Healthcare, Inc.
Who Cares About Us? Inc.
Wilmington Ballet Academy of the Dance, Inc.
Wilmington Drama League
Wilmington Housing Partnership
Wilmington Montessori School
Wilmington Renaissance Corporation
Wilmington Senior Center, Inc.
Wilmington Youth Jazz Band, Inc.
YMCA Of Delaware
YWCA Delaware, Inc.

SPECIAL THANKS TO OUR ALLIANCE PARTNERS!



INVESTING *for Good*™



NATIONAL AFFILIATIONS

